

Elite Female Sale 2019

CNT

**QUALITY
CATTLE
IS OUR
BUSINESS!**

*Join us on Friday
November 29th
2:00 PM
At the Farm
Pipestone, MN*

Lot 1: Chestnut Queedy WJ 975



*Maternal Sister to the 2019 Reserve Champion
Female MN State Fair & 2019 Reserve
Champion Angus SD State Fair!*



Welcome to the Chestnut Angus Farm Elite Female Sale!



Chestnut Angus Farm

Glenn & Sherri Johnson Family
2242 90th Ave., Pipestone, MN 56164
507-368-9220 or 507-820-1502 Cell
Wesly Cell 507-215-7348
Email us at: chestnut@itctel.com
www.chestnutangus.com

Justin Blumer is our right hand man and knows our herd very well. Special thanks to Justin for his hard work and dedication at Chestnut Angus Farm!

JUSTIN BLUMER 507-696-1133



Guest Consignor: Delaney Cattle Co.

John Delaney Family 320-380-3812

Well.... What can I say about this year! When people ask me how its going, I do everything to tell them that everything is AMAZING because nobody wants to hear anymore complaining about everything that could go wrong. The look on their face or the sound in their voice is always "What the hell is wrong with you!" Well life is to short not to be happy, while we have had a lot more days that gave us a struggle and hardships, than those days that went well, there is nothing that we can do about it so all we can do is hope and pray that the next day will be better. I have always found that a good way to pick yourself up is to go out and look at the things that brought you to where you are today, and part of that piece is the cows. Also, it's important to never forget your family, and close friends who have helped along the way, and provided support in any way that they can to get through this difficult time that everyone across the country is experiencing in the Agriculture Industry. With the challenges that we have faced, I can always count on the cattle to change things and move our operation in the right direction. With that said, I believe that this set of cattle is as strong as ever. We have put together a group of females that will work for several different operations with several different focus's and so rather than trying to tell you which one I think is the best one, rather its, "Which one will work the best for you and your operation." The bulls that we have mated these cows to are going to do some great things for our breed. These cows in their young age have seen a lot and gone through a lot in terms of mother nature. But they have prevailed and done their job very well and have a lot of years left in them as they are reaching their peak in terms of production. It is hard to sort through our bred heifers and decide which ones to offer, as they are the future of our program. The unknown as to what they can produce is what excites me about them, and its hard to let any of them go. If I had it my way, I would calve every one of them out, but due to space here, we have to keep our numbers in check which benefits you as our customers and us as well. Each year we try to do something intriguing to get people to come and see our cattle as we believe in quality rather than quantity. This year we are highlighting this year's sale with the pick of the entire 2019 Heifer Calf Crop. The remaining heifer calves that we are selling are once again the future and from show heifer prospects to future donor cows, these 6 heifer calves are from the very best in our operation. While I'm getting long winded in this letter and technology is not necessarily my forte, but I would love nothing more than for you to call myself, Wesly, or Justin, and visit with us about these cattle. All of us here share a vision and a passion to produce a quality product, and we would love to visit with you to see how our cattle and services can help you reach your goals. The bottom line is, these cattle will not only work but they will do great things for your operation. We keep the best and ship the rest, as we are driven to produce quality cattle for ourselves and our customers. I would like to thank my wife Sherri, two sons Wesly, and Dawson, as well as my hired man Justin for all of their countless hours of hard work. I would also like to thank all of our neighbors, friends, and customers for their continued support and help along this journey. Without you, this place could not function the way it does. We continue to try and find new and innovative ways to work with our customers and provide opportunities for them and reward them for using our genetics. With that we are here to help market your feeder cattle, and potentially buy back females. Please contact us anytime as your success is our success. With that, do me one favor and the next time someone asks you how it's going, tell them something positive because we all know 2019 has been a struggle. Keep your head up, your spirits alive, and join us November 29 for a special day of offering you a great set of females!

Glenn, Sherri, Wesly & Dawson
www.chestnutangus.com

507-820-1502 Glenn
507-215-7348 Wesly
612-805-7405 Val
507-696-1133 Justin
507-368-9220



Be sure to attend the Ladies In Red Event • Saturday, November 30th

Weber Land & Cattle, Lake Benton, MN • For more information, contact Jesse Weber 507-530-5427

CHESTNUT ANGUS FARM

Chestnut Angus Farm Elite Female Sale

Friday, November 29, 2019

2:00 PM at the Farm, Pipestone, Minnesota

**68 LOTS WILL SELL INCLUDING FANCY OPEN HEIFER CALVES,
BRED HEIFERS AND PROVEN COWS! PLUS A VERY SPECIAL PICK LOT!**

**Black
Friday
Sale!**

... VIDEO SALE ONLY! ...

*Cattle viewing available at the farm prior to sale and sale day.
Snacks & refreshments available before and during sale.*

Sale Headquarters:

Crossings by Grandstay Inn & Suites, 915 7th St SE, Pipestone, MN.....507-562-1100

Airports: Joe Foss Field: Sioux Falls, SD (50 miles from sale site)

Directions to Sale Site: 10 miles N of Pipestone on Hwy. 75, 1 mile E, 1 1/2 miles N

Auctioneer: Seth Weishaar.....605-210-1124

Marketing Representatives:

Val Eberspacher, EE Sales.....612-805-7405

Bill Shermer, The Stockman.....641-425-2641

Jesse Weber.....507-530-5427

Chris Effling.....605-769-0142

Scott Bayler.....715-573-4943

Tony Heins, Cattle Business Weekly.....701-400-4435

Jim Pannel.....307-290-2346

Ryan VanZee.....712-441-1850

Updates & Sale Order: Additional information and sale order can be found on the Eberspacher Enterprises Inc. Facebook page. Like us & receive updates automatically.

Announcements: Announcements made sale day and from the auction block during the sale take precedence over printed materials associated with this sale. Anyone attending this sale attends at their own risk. Chestnut Angus and sale force will not be held responsible for any personal injury for attending this sale.

Terms & Conditions: All cattle sell under the terms and conditions of the American Angus and Simmental Associations. Terms available sale day.

EPDs: The EPDs listed are Fall 2019 numbers. Please note that EPDs may change from the time the sale catalog is printed until registration papers are transferred.

Trucking: Sales management will assist buyers in coordinating and making the most economical trucking possible.

Insurance: Insurance available through sale management and Jame Secondino, American Livestock Insurance...812-208-0956

LiveAuctions.TV

Online Bidding Available!

Real-time bidding is available via the internet for this sale. Live audio and live video will allow buyers to bid on animals just as if they were present at the sale. Please visit www.LiveAuctions.tv to create an account and request a buyer number. Instructions are available at www.LiveAuctions.tv to walk you through the account setup process. Buyers who would like to bid via the internet must register with LiveAuctions.tv prior to the sale. For more information, call Amanda Eberspacher-Hilbrands at 507-828-7089.

Professional Sale Management:

Eberspacher
ENTERPRISES INC.

Val & Lori Eberspacher
507-532-6694 or 612-805-7405
sales@ebersale.com

Download the EE smart phone APP!
View online at www.ebersale.com



Scan with your smart
phone for all sale info



1

Chestnut Queedy WJ 975



REG#19544397 BD: 2-21-19
Tattoo: 975 BW: 75 Adj. WW: 667

Connealy Consensus 7229
Connealy Black Granite
Eura Elga of Conanga 9109
Werner Flat Top 4136
C R A Bextor 872 5205 608
Werner Lady 0304
SandPoint Lady 7869
VA First Round
Chestnut Knock Out 204
Chestnut Queen Lucy 028
Chestnut Queedy WJ 633
Conley PR Fullback 0604
Conley Queedy 535
WL 788 Miss Queedy 595-1135



Maternal Sister

This is a half sister to the Champion Angus and Reserve Champion Female at the Minnesota State Fair and Reserve Champion Angus at the South Dakota State Fair. This heifer is her mother's second calf and let's just say she is doing a tremendous job! This heifer calf is a sharper fronted, more extended version of her half sister with more thickness and true genuine muscle shape. Still one that is bold sprung and deep bodied and sound as a cat. This one is sexy sleek and sophisticated and the proof is in the pudding as to what this calf's mother has produced. The future is extremely bright and if her mother continues to do what she does, this might be the only daughter we offer out of her. Big time show heifer and donor cow potential with this one that commands Quality in every aspect from every angle! A picture is worth a thousand words but studying her in person she might create more. She has us fired up and hopefully this fine beauty can be yours come sale day!

BW:	-1
WW:	+62
YW:	+122
Milk:	+33
\$B:	+146

2

Chestnut Peg WJ 912



REG#19544395 BD: 1-24-19
Tattoo: 912 BW: 60 Adj. WW: 679

Connealy Capitalist 028
LD Capitalist 316
LD Dixie Erica 2053
Musgrave 316 Stunner
MCATL Pure Product 903-55
MCATL Blackbird 831-1378
MCATL Blackbird 1378-573
Barstow Cash
Barstow Bankroll B73
Barstow Miss Dianna Z25
Chestnut WJ Peg 780
VA First Round
Chestnut WJ Peg 436
Chestnut Peg 9589 WJ

Wow! Here is a powerhouse heifer calf that has donor written all over. If genetics and EPDs are more of what your interested in she lands in the top 10% of the breed for CED, BW, WW, YW, and CEM. Study this one on foot and she is sleek fronted, flat shouldered then explodes to a massive ribcage with plenty of dimension and thickness all the way. Set her in motion and she is sound as a cat. We recently did an article in the Stockman magazine and we were to list a cow that has influenced our program. I think we could write a novel as to how the Peg Cow family and specifically 9589 has dramatically improved our program in every way possible. We believe in cow families and this one comes from the heart of the very best. Out of one of the most popular bulls used in Genex's lineup Stunner, this girl is without question a Stunner on paper and even more of one when you see her in person!

BW:	-1.1
WW:	+68
YW:	+121
Milk:	+25
\$B:	*

3

Chestnut Erica WJ 943

REG#19544396 BD: 2-6-19
Tattoo: 943 BW: 85 Adj. WW: 610

Connealy Consensus 7229
Connealy Black Granite
Eura Elga of Conanga 9109
Werner Flat Top 4136
C R A Bextor 872 5205 608
Werner Lady 0304
SandPoint Lady 7869
Southland Two Fitty 250T
Southland Thriller 83X
Southland Belle 89R
LH Erica 2002
VAR Lifeline 1672
LH Erica 484
L H Erica 910



We bred a few cows to Flat Top and holy moly were we impressed with the results. This females mother time and time again has produced several females that have not only gone on to be successful show heifers but most importantly have been tremendous cows for their respective owners producing calves that have gone on to be successful in the show ring as well as the production herd. This female is no exception and we are confident will follow in her half siblings footsteps. We absolutely love the cow power that this one brings to the table possessing that added thickness and dimension throughout with tons of body and rib. She is super sound and flexible on the move and is ultra maternal in her look. Love this ones head shape and how she combines her added power with plenty of look and balance from the side. One that just continues to look better and better each and every day and come sale day and beyond will be a force to be reckoned with

BW:	+1.6
WW:	+52
YW:	+97
Milk:	+25
\$B:	+127

4

Chestnut Mulben Pride WJ 964

REG#19544393 BD: 2-12-19
Tattoo: 964 BW: 89 Adj. WW: 561

Connealy Capitalist 028
LD Capitalist 316
LD Dixie Erica 2053
Musgrave 316 Stunner
MCATL Pure Product 903-55
MCATL Blackbird 831-1378
MCATL Blackbird 1378-573
P R Black Friday 0244
Penners-CC Double Black 2257
P R 629 205-554
Penners Mulben Pride 517
S A V Net Worth 4200
P R Lady 909 4200-587
P R 587 205-537



Deadly from the side is what comes to mind when studying this female. One that is tremendous in terms of her neck shoulder junction, her added length and levelness of spine. Love this one's body shape as she is awesome in the way her forerib ties into her chest floor and carries that back with plenty of depth of flank. Plenty of dimension and power from behind and is so elegant on the move. Her mother time and time again has produced good ones and this is without question the best one yet. Talk about one with a ton of future because this ones unique pieces while still maintaining the fundamentals make her a terrific candidate to be an awesome show heifer as well as a tremendous cow. Buy with confidence on this one because they don't make them like this every day. This one is special!

BW:	3.4
WW:	+58
YW:	+100
Milk:	+26
\$B:	*

5

Chestnut Fannie 933

REG#19542921 BD: 2-13-19
Tattoo: 933 BW: 64 Adj. WW: 659



VA First Round
Chestnut Knock Out 204
Chestnut Queen Lucy 028
Chestnut Undisputed GLM
TC Freedom 104
TC Peggy 5064
TC Peggy 8098
B/R New Day 454
V A R Reserve 1111
Sandpoint Blackbird 8809
Chestnut Fannie 64
VA First Round
Chestnut Fannie 429
CN Fannie 9509

Undisputed was one of the most talked about bulls at the 2017 National Western Stock Show and a member of the Reserve Division pen of Bulls in Denver. Females like this one are the reason why more and more people are going to use him more extensively in their program. This one's presence is absolutely second to none. You want to talk about one that checks all of the boxes and is built from the ground up, this one has big feet and legs, is bold in her center body, and extra stout in terms of hip and pin width. Youthful in her head and neck and out of a really good young cow, we would be lying to you if we said this one didn't have us fired up. So good everywhere and simply so COMPLETE we hope you see her come sale day so you can appreciate her as much as we do.

BW:	-1
WW:	+60
YW:	+103
Milk:	+34
\$B:	+137

6

Chestnut Blackcap 973

REG#19542924 BD: 2-21-19
Tattoo: 973 BW: 85 Adj. WW: 621



S A V 8180 Traveler 004
S A V 004 Density 4336
S A V May 7238
Bruin Torque 5261
Connealy Dateline
Falcon Blackbird 6071
Vermilion Blackbird 5044
Sitz Upward 307R
Chestnut PF Up Start 760
Chestnut Beauty 319
Chestnut Blackcap 665
Mogck Bullseye
Chestnut Blackcap 481
Mohnen Blackcap J530

A really good Torque daughter whose mother is what we would call a picture perfect cow. Just like her mother this one is super bold sprung and deep bodied with extra stoutness in terms of foot and bone. She is very athletic on the move and possesses that added length of front with plenty of youthfulness about her head. Not to mention she is super fuzzy and will be a fun one to show this winter and next summer. If she matures to be half of what her mother looks like this is going to be one beautiful and profitable cow. Power in the blood with this one.

BW:	+26
WW:	+58
YW:	+107
Milk:	+28
\$B:	*

7

Chestnut Beauty 831

REG#19290377 BD: 1-25-18

Tattoo: 831 BW: 50 Adj. WW: 612 Adj. YW: 815

KG Solution 0018
HA Outside 3008
HA Ever Lady 1575
HA Cowboy Up 5405
Sitz Upward 307R
HA Blackcap Lady 1602
HA Blackcap Lady 5515
Sitz Upward 307R
Chestnut PF Up Start 760
Chestnut Beauty 319
Chestnut Beauty 336
WK Redo
CN Beauty 08
C N Beauty 8538

A.I. Sire: MOGCK Entice on 4-14-19
Safe to AI • Due approx 1-19-20
Pasture Sire: R5 Solution E111
from 5-19 to 6-6-19
Pasture Sire: CN Conversation GLM 1408
from 6-9 to 8-1-19



Bred Heifers

BW: **-1.4**
WW: **+60**
YW: **+105**
Milk: **+15**
\$B: **+117**

Here is a Cowboy Up daughter that lands in the top 3% of the breed for CED and 10% for BW. Her powerhouse mother is also selling in this year and we feel this is maybe a more extended version of her mother while still maintaining that powerful brood cow look. The skys the limit with this female.



MOGCK Entice,
AI Sire

8

CN Ruby Blackbird WJ 810

REG#19290369
BD: 1-10-18
Tattoo: 810
BW: 62
Adj. WW: 607
Adj. YW: 860

BW: **+0**
WW: **+34**
YW: **+65**
Milk: **+23**
\$B: *****

A.I. Sire: Jindra Acclaim on 5-9-19
Safe to AI • Due approx 2-3-20
Pasture Sire: R5 Solution E111
from 5-19 to 6-6-19
Pasture Sire: CN Conversation
GLM 1408 from 6-9 to 8-1-19

Mytty In Focus
MOGCK Sure Shot
Mogck Black Lass 2065
Chestnut Sure Shot 54
KF Danny 387
CN Queen Lucy 280
CN Queen Lucy 2402 7337
PVF ALL PAYDAY 729
Bussmus PayDay 2610
WK Jewel 6433
CN Ruby Blackbird 699
TR Mr Final Answer 9725W ET
CN Ruby Blackbird 111
CN Ruby Blackbird 929



Jindra Acclaim,
AI Sire

Certainly a calving ease oriented female that is more moderate in her frame size while still being massive middled with that sharp angular feminine front end. Tons of cow power with this one not to mention these sure shot daughters have done great things here for our program.

9

Chestnut Beauty 850

REG#19291429
BD: 2-4-18
Tattoo: 850
BW: 63
Adj. WW: 592
Adj. YW: 866

BW: **-5**
WW: **+52**
YW: **+99**
Milk: **+18**
\$B: **+125**

This female lands in the top 5% of the breed for CED and 15% for BW. Certainly a maternally oriented female that has that added brood cow look. We are really happy with these Cowboy Up daughters and this one is no exception. Tons of future in this female.

A.I. Sire: RIDL Roosevelt on 5-4-19
Pasture Sire: R5 Solution E111 from 5-19 to 6-6-19 Safe • Due End Feb/Early March
Pasture Sire: CN Conversation GLM 1408 from 6-9 to 8-1-19

KG Solution 0018
HA Outside 3008
HA Ever Lady 1575
HA Cowboy Up 5405
Sitz Upward 307R
HA Blackcap Lady 1602
HA Blackcap Lady 5515
Sitz Upward 307R
Chestnut PF Up Start 760
Chestnut Beauty 319
Chestnut Beauty 8518 223
WK Wacker
CN Beauty 251 8518
CN Beauty Ultravox 251

10 Chestnut Beauty JB 847

REG#19290383 BD: 2-3-18

Tattoo: 847 BW: 78 Adj. WW: 670 Adj. YW: 937



BW: +1.2
WW: +65
YW: +119
Milk: +17
\$B: +123

Another Cowboy Up daughter that lands in the top 15% for WW and top 10% for YW. A maternal sister also sells in this year's sale. This female is super complete in her build as well as in her type and kind. Big bodied and easy fleshing with tons of brood cow potential.

KG Solution 0018
HA Outside 3008
HA Ever Lady 1575
HA Cowboy Up 5405
Sitz Upward 307R
HA Blackcap Lady 1602
HA Blackcap Lady 5515
Sitz Dash 10277
Barstow Cash
Barstow Queen W16
Chestnut Beauty 65 324
WK Wacker
Chestnut BEAUTY65
Chestnut Beauty 319

A.I. Sire: MOGCK Entice
on 4-14-19 Safe to AI • Due approx 1-19-20
Pasture Sire: R5 Solution E111
from 5-19 to 6-6-19
Pasture Sire: CN Conversation GLM 1408
from 6-9 to 8-1-19



MOGCK Entice,
AI Sire

11 Chestnut Elaine 841

REG#19290380

BD: 2-1-18

Tattoo: 841

BW: 60

Adj. WW: 644

Adj. YW: 902

BW: +4.4
WW: +60
YW: +104
Milk: +26
\$B: +131

A.I. Sire: Ellingson Homestead
on 4-14-19 Safe to AI
Due approx 1-19-20

Pasture Sire: R5 Solution E111
from 5-19 to 6-6-19

Pasture Sire: CN Conversation
GLM 1408 from 6-9 to 8-1-19

Gambles Royal Flush
Visiontopline Royal Stockman
LaGrand Pride 7140
Chestnut Royal Stockman 326
KF Danny 387
CN Queen Mab 271
Cnqueen Mab 7157
LaGrand Sun Dance 4211
Plainview Sun Dance G39
S C C Beauty 2100
CN Elaine 9309
WK Wacker
CN Elaine 646
Chestnut Elaine 320 321



Ellingson Homestead, AI Sire



We LOVE these Royal Stockman daughters. They are high performing, long bodied, sound moving easy fleshing, maternally oriented females. This girl is no different. Out of a cow that time and time again gets the job done. Tons of productivity and longevity in this one with an exciting future.

12 Chestnut Blackcap 852

REG#19290385

BD: 2-6-18

Tattoo: 852

BW: 66

Adj. WW: 563

Adj. YW: 809

BW: -1.3
WW: +44
YW: +76
Milk: +15
\$B: +107

Another maternally oriented female on paper landing in the top 5% of the breed for CED and 10% for BW. Out of a really good Up Start daughter that certainly did her job and then some during her production years here at Chestnut Angus. The skys the limit with this one.

A.I. Sire: MOGCK Entice on 4-14-19

Pasture Sire: R5 Solution E111 from 5-19 to 6-6-19

Pasture Sire: CN Conversation GLM 1408 from 6-9 to 8-1-19 Safe
Due Mid March



MOGCK Entice, AI Sire

A A R Windy Ridge 362
A A R Really Windy 1205
A A R Lady Kelton 2170
V D A R Really Windy 4097
VDAR Enterprise 2059
VDAR Blackbird 2031
VDAR Envious Blackbird 6060
Sitz Upward 307R
Chestnut PF Up Start 760
Chestnut Beauty 319
Chestnut Blackcap 342
Chestnut Freedom 115
CN Blackcap 717
Mohnen Blackcap 999

13 Chestnut Ruby GD 856

REG#19290387 BD: 2-7-18

Tattoo: 856 BW: 87 Adj. WW: 730 Adj. YW: 997

Sitz Dash 10277
Barstow Cash
Barstow Queen W16
Barstow Bankroll B73
CAR Efficient 534
Barstow Miss Dianna Z25
Barstow Miss Dianna X128
TC One Way 618
WK Redo
WK Miss Angus 4587
Chestnut Ruby 128 WJ
WK 2500 MC 6116
C N Ruby 54w 8378
Chestnut Ruby Improvement 54

A.I. Sire: Stevenson Turning Point on 5-5-19
Pasture Sire: R5 Solution E111
from 5-19 to 6-6-19 Safe
Due End Feb/Early March
Pasture Sire: CN Conversation GLM 1408
from 6-9 to 8-1-19

BW: **+2.4**
WW: **+65**
YW: **+120**
Milk: **+22**
\$B: **+129**

Woah talk about a powerhouse with power in the blood. She is a maternal sister to the Champion Angus Bull at the 2018 BHSS who was a member of our Denver Pen of 3 Bulls. Sired by Barstow Bankroll, we absolutely love the cattle out of him on the Bull, Female, and Steer side of things. Combine that with a strong EPD profile makes this one a true sale highlight.



Maternal Brother

14 Chestnut Elaine 863

REG#19290390
BD: 2-8-18
Tattoo: 863
BW: 92
Adj. WW: 638
Adj. YW: 928

BW: **+3.9**
WW: **+55**
YW: **+101**
Milk: **+24**
\$B: **+115**

O C C Focus 813F
O C C Paxton 730P
O C C Blackbird 736K
Coleman Charlo 0256
Sitz Traveler 8180
Bohi Abigale 6014
S A V Abigale 6062
A A R Really Windy 1205
V D A R Really Windy 4097
VDAR Blackbird 2031
Chestnut Elaine 340
Plainview Sun Dance G39
CN Elaine 9309
CN Elaine 646

A.I. Sire: Werner Flat Top
on 5-6-18
Pasture Sire: R5 Solution E111
from 5-19 to 6-6-19
Pasture Sire: CN Conversation
GLM 1408 from 6-9 to 8-1-19 Safe
Due Mid March



CN Conversation GLM 1408, Pasture Sire

Here is another Charlo daughter that is big bodied easy fleshing with plenty of performance on foot combined with a good phenotypic feminine look. Practical and functional with that commanding brood cow look.

15 Chestnut Missy 854

REG#19290386
BD: 2-7-18
Tattoo: 854
BW: 75
Adj. WW: 612
Adj. YW: 868

BW: **+4**
WW: **+44**
YW: **+78**
Milk: **+26**
\$B: **+107**

A really good Charlo daughter that is massive bodied super sound and youthful in her overall look and design. This girl is super cowy in her look with plenty of thickness and dimension all the way through. Super complete female that you won't want to miss come sale day.

A.I. Sire: Enhance on 4-15-19 Safe to AI • Due approx 1-20-20
Pasture Sire: R5 Solution E111 from 5-19 to 6-6-19
Pasture Sire: CN Conversation GLM 1408 from 6-9 to 8-1-19

O C C Focus 813F
O C C Paxton 730P
O C C Blackbird 736K
Coleman Charlo 0256
Sitz Traveler 8180
Bohi Abigale 6014
S A V Abigale 6062
Plainview Lutton E102
Fruhling Shadow
Fruhling Sieville Lady
Chestnut Missy 243
Sitz S L S Rainmaker 7596
North Fork Missy 1013
North Fork Missy 9034

16 Chestnut Beauty 873

REG#19291414 BD: 2-9-18

Tattoo: 873 BW: 68 Adj. WW: 483 Adj. YW: 726



BW: **-3**
WW: **+46**
YW: **+90**
Milk: **+17**
\$B: **+108**

Top 10% for CED as well as RADG. A Cowboy Up Daughter that combines quality on foot as well as maternal and performance traits on paper. Super cowy in her look and sound on the move with tons of brood cow potential



CN Conversation GLM 1408, Pasture Sire

KG Solution 0018
HA Outside 3008
HA Ever Lady 1575
HA Cowboy Up 5405
Sitz Upward 307R
HA Blackcap Lady 1602
HA Blackcap Lady 5515
Sitz Dash 10277
Barstow Cash
Barstow Queen W16
Chestnut Beauty 335
WK Wacker
Chestnut BEAUTY65
Chestnut Beauty 319

A.I. Sire: Werner Flat Top on 5-6-19
Pasture Sire: R5 Solution E111 from 5-19 to 6-6-19
Pasture Sire: CN Conversation GLM 1408 from 6-9 to 8-1-19 Safe
Due End March/Early April

17 Chestnut Princess 864



KR Synergy, AI Sire

REG#19291404

BD: 2-8-18

Tattoo: 864

BW: 82

Adj. WW: 693

Adj. YW: 951

BW: **+3.6**
WW: **+66**
YW: **+120**
Milk: **+18**
\$B: **+120**

A.I. Sire: KR Synergy on 4-15-19 Safe to AI Due approx 1-20-20
Pasture Sire: R5 Solution E111 from 5-19 to 6-6-19
Pasture Sire: CN Conversation GLM 1408 from 6-9 to 8-1-19

KG Solution 0018
HA Outside 3008
HA Ever Lady 1575
HA Cowboy Up 5405
Sitz Upward 307R
HA Blackcap Lady 1602
HA Blackcap Lady 5515
Connealy Final Product
MCATL By-Product 269-1394
M A Blackcap Missie 1394-936
Chestnut Princess 531
VAR Rocky 80029
Chestnut Princess 134
CN Princess 429 617

Here is a Cowboy Up daughter that lands in the top 10% of the breed for YW, 15% WW, and 25% \$F. Out of an awesome young cow that never misses. These Cowboy Up daughters have sure possessed a lot of quality as well as consistency, and this female is no exception.

18 Chestnut Blackbird 882

REG#19290399

BD: 2-12-18

Tattoo: 882

BW: 70

Adj. WW: 581

Adj. YW: 829

BW: **-7**
WW: **+44**
YW: **+86**
Milk: **+26**
\$B: **+141**

We really like these Remedy cattle and this heifer is no exception. Out of a consistent Impressive daughter and this heifer ranks in the top 15% for BW and 30% for \$B. Super complete one that combines quality on foot and paper.



CN Conversation GLM 1408, Pasture Sire

Baldrige Kaboom K243 KCF
Connealy Thunder
Parka of Conanga 241
CTS Remedy 1T01
L T 598 Bando 9074
CTS 7V03 Bellemere Maid 9T02
SVA Rita 7V03 of 1407 502
Basin Excitement
Mohnen Impressive 1093
Mohnen Jilt 787
Chestnut Blackbird 578
B/R New Frontier 095
CN Blackbird 618
Chestnut Blkbird Fortune 262

A.I. Sire: Redemption on 5-2-19
Pasture Sire: R5 Solution E111 from 5-19 to 6-6-19
Pasture Sire: CN Conversation GLM 1408 from 6-9 to 8-1-19 Safe • Due End March/Early April

19 Chestnut Queen Eva 876

REG#19220186 BD: 2-10-18

Tattoo: 876 BW: 83 Adj. WW: 697 Adj. YW: N/A

VA First Round
Chestnut Knock Out 204
Chestnut Queen Lucy 028
Chestnut Undisputed GLM
TC Freedom 104
TC Peggy 5064
TC Peggy 8098
TC One Way 618
WK Redo
WK Miss Angus 4587
CN PF Queen Eva 025 460
Pine Ridge Hammer S322
CN Queen Eva 025
Chestnut Queen Eva 56

A.I. Sire: Stevenson Turning Point on 5-17-19
Pasture Sire: R5 Solution E111
from 5-19 to 6-6-19
Pasture Sire: CN Conversation GLM 1408
from 6-9 to 8-1-19 Safe • Due late April/Early
May

BW: **+4.0**
WW: **+59**
YW: **+107**
Milk: **+36**
\$B: **+127**

Here is a really good Undisputed daughter whose mom is also one of the featured 5 year old cows on this years sale. If this heifer is any indication of what the Undisputed heifers are going to turn out then we better use him more. She is high performing, big footed, stout featured female thats super cowy with tons of future.



CN Conversation GLM
1408, Pasture Sire

20 Chestnut Blackcap 889

REG#19291432
BD: 2-14-18
Tattoo: 889
BW: 94
Adj. WW: 692
Adj. YW: 938

BW: **+4.6**
WW: **+67**
YW: **+116**
Milk: **+14**
\$B: **+129**

A.I. Sire: Redemption on 5-7-19
Pasture Sire: R5 Solution E111
from 5-19 to 6-6-19
Pasture Sire: CN Conversation
GLM 1408 from 6-9 to 8-1-19
Safe • Due Mid End March

KG Solution 0018
HA Outside 3008
HA Ever Lady 1575
HA Cowboy Up 5405
Sitz Upward 307R
HA Blackcap Lady 1602
HA Blackcap Lady 5515
S A V 8180 Traveler 004
S A V 004 Density 4336
S A V May 7238
Mohnen Blackcap J530
N Bar Emulation EXT
A L C Blackcap E03F
Bon View Blackcap 1330



CN Conversation GLM
1408, Pasture Sire

Once again another impressive Cowboy Up daughter that has a lot of performance and eye appeal on foot. Look down on paper and she lands in the top 15% of the breed for WW and YW as well as \$F. Certainly will stamp performance into her progeny making her profitable for years to come.

21 Chestnut Queen Herself 886

REG#19298728
BD: 2-14-18
Tattoo: 886
BW: 82
Adj. WW: 611
Adj. YW: 843

BW: **+2.3**
WW: **+50**
YW: **+84**
Milk: **+21**
\$B: **+113**

A Charlo daughter whose mother is also one of the 5 year old cows on this years sale. Her mother is an awesome First Round Daughter and with the popularity of Charlo this female is destined for great things in her future.



MOGCK Entice,
AI Sire

A.I. Sire: MOGCK Entice on 5-6-19 Safe to AI • Due approx 2-1-20
Pasture Sire: R5 Solution E111 from 5-19 to 6-6-19
Pasture Sire: CN Conversation GLM 1408 from 6-9 to 8-1-19

O C C Focus 813F
O C C Paxton 730P
O C C Blackbird 736K
Coleman Charlo 0256
Sitz Traveler 8180
Bohi Abigale 6014
S A V Abigale 6062
Dameron First Class
VA First Round
R&C Keystone Lady 106K-810U
Chestnut Queen Herself 427
Chestnut Onyx 167
CN Queen Herself 042
Chestnut Queen Herself 2362

22

Chestnut Georgina 895



Coleman Charlo 0256, Sire

REG#19290407
BD: 2-17-18
Tattoo: 895
BW: 60
Adj. WW: 570
Adj. YW: 852

BW: **-1.1**
WW: **+43**
YW: **+80**
Milk: **+23**
SB: *****

A.I. Sire: MOGCK Entice
on 4-15-19 Safe to AI
Due approx 1-20-20
Pasture Sire: R5 Solution E111
from 5-19 to 6-6-19
Pasture Sire: CN Conversation GLM
1408 from 6-9 to 8-1-19

O C C Focus 813F
O C C Paxton 730P
O C C Blackbird 736K
Coleman Charlo 0256
Sitz Traveler 8180
Bohi Abigale 6014
S A V Abigale 6062
Dameron First Class
VA First Round
R&C Keystone Lady 106K-810U
Chestnut Georgina 431
EXAR WK 1560
WK Georgina 3416
WK Georgina 1338

A member of the Georgina Cow family and one that lands in the top 5% for CED and 10% for BW. Very maternal appearing female that commands that brood cow look. Certainly one that will pass that on to her progeny making her versatile for years to come.



MOGCK Entice,
AI Sire

23

Chestnut Miss Bando 8102



HA Cowboy Up 5405, Sire

REG#19291413
BD: 3-2-18
Tattoo: 8102
BW: 78
Adj. WW: 657
Adj. YW: 897

BW: **+2.9**
WW: **+67**
YW: **+116**
Milk: **+16**
SB: *****

A.I. Sire: Basin Rainmaker 4404
on 4-15-19 Safe to AI
Due approx 1-20-20
Pasture Sire: R5 Solution E111
from 5-19 to 6-6-19
Pasture Sire: CN Conversation GLM
1408 from 6-9 to 8-1-19

KG Solution 0018
HA Outside 3008
HA Ever Lady 1575
HA Cowboy Up 5405
Sitz Upward 307R
HA Blackcap Lady 1602
HA Blackcap Lady 5515
Leachman Right Time 338-5605
WMR Timeless 458
WMR Blackcap 521
CN Miss Bando 319
Chestnut Marathon 17
CN Miss Bando 077
T&S MISS Bandc58

Here is a bold sprung easy fleshing female that lands in the top 15% of the breed for YW and WW. This one is very practical in her type and kind and has that added thickness and dimension. Out of a super consistent cow, these are the kind that are nothing but profitable no matter which way you mate them.



Basin
Rainmaker
4404, AI Sire

24

Chestnut Lucy WJ 8106



Chestnut Undisputed GLM, Sire

REG#19290415
BD: 3-5-18
Tattoo: 8106
BW: 67
Adj. WW: 593
Adj. YW: 815

BW: **+4.6**
WW: **+54**
YW: **+104**
Milk: **+36**
SB: **+132**

A.I. Sire: KR Incredible 8166
on 4-15-19
Pasture Sire: R5 Solution E111
from 5-19 to 6-6-19
Pasture Sire: CN Conversation
GLM 1408 from 6-9 to 8-1-19 Safe
Due Mid End March

VA First Round
Chestnut Knock Out 204
Chestnut Queen Lucy 028
Chestnut Undisputed GLM
TC Freedom 104
TC Peggy 5064
TC Peggy 8098
PVF ALL PAYDAY 729
Bussmus PayDay 2610
WK Jewel 6433
Chestnut Lucy WJ 363
B E B Juneau 104
CLF Lucy 92W
Chestnut Lucy Wacker 481

Here is an Undisputed daughter that is super long and angular and really good in her lines. Big footed and stout boned with tons of athleticism as she gets out and travels. On paper she lands in the top 4% of the breed for \$F. Certainly one that will be profitable in your operation backed by a young up and coming sire whom we are excited to see his daughters enter production.



CN Conversation
GLM 1408,
Pasture Sire

25 Chestnut Winnie 8109

REG#19290416
BD: 3-6-18
Tattoo: 8109
BW: 84
Adj. WW: 687
Adj. YW: 914

BW: **+4.3**
WW: **+69**
YW: **+114**
Milk: **+28**
SB: **+136**

A.I. Sire: MOGCK Entice
on 4-14-19 Safe to AI
Due approx 1-19-20

Pasture Sire: R5 Solution E111
from 5-19 to 6-6-19

Pasture Sire: CN Conversation GLM
1408 from 6-9 to 8-1-19

Connealy Consensus
Connealy Earnan 076E
Brazila of Conanga 3991 839A
Brooking Asset 5065
S A V Final Answer 0035
E A Rose 918
E A Rose 738
MCC Daybreak
Woodhill Daybreak U280-X20
Woodhill Evergreen 285M-U280
Chestnut Winnie 57
VAR Rocky 80029
Chestnut Winnie 322
Chestnut Winnie 023



Brooking Asset 5065, Sire



MOGCK Entice,
AI Sire

An Asset daughter that lands in the top 10% for WW and 15% for YW and top 25% for \$W. The Winnie Cow family has made a major impact on our operation generating top end replacements as well as several bulls and females that have made our Denver String. Buy with confidence as there is certainly power on foot as well as in the cow family.

26 Chestnut Elaine 8112

REG#19290419
BD: 3-7-18
Tattoo: 8112
BW: 73
Adj. WW: 577
Adj. YW: 788

BW: **+2.2**
WW: **+56**
YW: **+93**
Milk: **+23**
SB: **+120**

Another Asset daughter that is super functional in her kind and practical in her build. Long bodied and smooth patterned with a great maternal presence about her. These Asset daughters have done well for us in production weaning off big calves and simply getting the job done. No question that this one will do the same thing.

A.I. Sire: Jindra Acclaim on 5-8-19

Pasture Sire: R5 Solution E111 from 5-19 to 6-6-19 Safe • Due End Feb

Pasture Sire: CN Conversation GLM 1408 from 6-9 to 8-1-19

Connealy Consensus
Connealy Earnan 076E
Brazila of Conanga 3991 839A
Brooking Asset 5065
S A V Final Answer 0035
E A Rose 918
E A Rose 738
Connealy Earnan 076E
Musgrave Big Sky
SAV Primrose 7861
Chestnut Elaine 582
WK Redo
Chestnut Elaine 129
C N Elaine 8438

27 Chestnut Georgina 8113

REG#19290420
BD: 3-7-18
Tattoo: 8113
BW: 80
Adj. WW: 659
Adj. YW: 889

BW: **+2.2**
WW: **+61**
YW: **+102**
Milk: **+25**
SB: **+124**

A member of the Georgina Cow family which needs no introduction in the Angus Industry. This girl lands in the top 25% for WW as well as \$M. Super versatile and complete both on foot and paper and being a Georgina should be reason enough that she will make an awesome cow.

A.I. Sire: KR Synergy on 4-14-19 Safe to AI • Due approx 1-19-20

Pasture Sire: R5 Solution E111 from 5-19 to 6-6-19

Pasture Sire: CN Conversation GLM 1408 from 6-9 to 8-1-19

Connealy Consensus
Connealy Earnan 076E
Brazila of Conanga 3991 839A
Brooking Asset 5065
S A V Final Answer 0035
E A Rose 918
E A Rose 738
MCATL Hoover Dam 781-326
Woodhill Mel X219-A191
Woodhill SW Maiden S53-X219
Chestnut Georgina 599
VAR Rocky 80029
Chestnut Georgina 234
WK Georgina 3416



KR Synergy, AI Sire



SAVE THE DATE!

Wednesday, February 26th, 2020

Selling 60 powerhouse bulls and
15 commercial cow/calf pairs!

WE INVITE YOU TO JOIN US AT OUR
FARM NEAR PIPESTONE, MN

28 Chestnut Monica 8114



BW: **+3.2**
WW: **+56**
YW: **+100**
Milk: **+26**
\$B: **+136**

The only Big Sky daughter on the sale and one that we think is very complete. Her mother is one of the feature females on this years sale and just like her mother this one is built from the ground up. She is big footed and stout boned with plenty of body as well as length and extension. Phenotypically super complete and should follow in her mother's footsteps by being a tremendous cow.

REG#19290421 BD: 3-7-18
Tattoo: 8114 BW: 86 Adj. WW: 640 Adj. YW: 885

Connealy Consensus
Connealy Earnan 076E
Brazila of Conanga 3991 839A
Musgrave Big Sky
S A F 598 Bando 5175
SAV Primrose 7861
S A V Primrose 8244
HF Tiger 5T
HF Untapped 58Z
HF Blackbird 223U
Chestnut Monica 425
JAF Over the Limit 14U
Chestnut Monica 221
TRMS Monica 7002T

A.I. Sire: Werner Flat Top on 5-14-19
Safe to AI • Due approx 2-19-20
Pasture Sire: R5 Solution E111
from 5-19 to 6-6-19
Pasture Sire: CN Conversation GLM 1408
from 6-9 to 8-1-19



Werner Flat Top,
AI Sire

29 Chestnut Fannie 8115



HA Cowboy Up 5405, Sire



CN Conversation GLM
1408, Pasture Sire

REG#19291417
BD: 3-8-18
Tattoo: 8115
BW: 75
Adj. WW: 614
Adj. YW: 851

BW: **+2.0**
WW: **+59**
YW: **+103**
Milk: **+15**
\$B: **+111**

A.I. Sire: Jindra Acclaim on 5-6-19
Pasture Sire: R5 Solution E111
from 5-19 to 6-6-19
Pasture Sire: CN Conversation
GLM 1408 from 6-9 to 8-1-19 Safe
Due Mid March

KG Solution 0018
HA Outside 3008
HA Ever Lady 1575
HA Cowboy Up 5405
Sitz Upward 307R
HA Blackcap Lady 1602
HA Blackcap Lady 5515
Dameron First Class
VA First Round
R&C Keystone Lady 106K-810U
Chestnut Fannie 429
K F Traveler 106
CN Fannie 9509
CN Fannie 5517 7127

Once again a daughter of one of the feature 5 year old females on this years production sale. First Round was one of the most influential bulls for our program generating Knockout among several other good bulls as well as super females. Combine that with the popular Cowboy Up and this female genetically and phenotypically has the potential to do great things once she enters production.

30 Chestnut Queen 8117

REG#19290423
BD: 3-8-18
Tattoo: 8117
BW: 80
Adj. WW: 583
Adj. YW: 837

BW: **+2.3**
WW: **+45**
YW: **+85**
Milk: **+14**
\$B: *****

Here is a Royal Stockman daughter that is super bold sprung and easy fleshing with plenty of thickness and dimension all the way through. Very youthful about her head and sound on the move. A very "no holes" kind of female that is going to make a tremendous cow.



Ellingson
Homestead,
AI Sire

A.I. Sire: Ellingson Homestead on 4-15-19 Safe to AI • Due approx 1-20-20
Pasture Sire: R5 Solution E111 from 5-19 to 6-6-19
Pasture Sire: CN Conversation GLM 1408 from 6-9 to 8-1-19

Gambles Royal Flush
Visiontopline Royal Stockman
LaGrand Pride 7140
Kramers R Stockman 4304 TL
S A V 8180 Traveler 004
W C C Primrose S168
W C C Primrose J237
Connealy Product 568
Connealy Final Product
Ebonista of Conanga 471
Chestnut Queen 35
WK Redo
Chestnut Queen 146
CN Queen 642 878

31 Chestnut Ruby WJ 8124

REG#19290427
BD: 3-10-18
Tattoo: 8124
BW: 75
Adj. WW: 534
Adj. YW: 761

BW: **+1.8**
WW: **+49**
YW: **+90**
Milk: **+24**
SB: **+127**

Another female out a first round daughter that combines that added look and balance with extra power and mass. She stamps a little extra performance as well while still being ultra correct in terms of feet and legs. Lots of longevity in this one with a little extra style to boot.

A.I. Sire: KR Incredible 8166 on 4-15-19
Pasture Sire: R5 Solution E111 from 5-19 to 6-6-19
Pasture Sire: CN Conversation GLM 1408 from 6-9 to 8-1-19 Safe • Due Mid March

K Bar D Joe Canada 18Y
KR Little Joe
WK Barrie 0175
VAR Little Joe 5105
Rito 4L60 of 2536 BVND 208
VAR Precision Lady 787
R F Lady 414
Dameron First Class
VA First Round
R&C Keystone Lady 106K-810U
Chestnut Ruby 540
TR Mr Final Answer 9046W
Chestnut Ruby 249
Chestnut Ruby 087

32 Chestnut Sandy 8132

REG#19290432
BD: 3-22-18
Tattoo: 8132
BW: 84
Adj. WW: 575
Adj. YW: 807

BW: **+3.1**
WW: **+56**
YW: **+94**
Milk: **+29**
SB: **+122**

Out of an impressive daughter and just like her mother this one is very sharp and angular in her overall design. Love the squareness of build with this one but still packs plenty of power. Certainly another one with a ton of quality and longevity.



RIDL Roosevelt,
AI Sire

A.I. Sire: RIDL Roosevelt on 5-5-19 Safe to AI • Due approx 2-9-20
Pasture Sire: R5 Solution E111 from 5-19 to 6-6-19
Pasture Sire: CN Conversation GLM 1408 from 6-9 to 8-1-19

Connealy Consensus
Connealy Earnan 076E
Brazila of Conanga 3991 839A
Brooking Asset 5065
S A V Final Answer 0035
E A Rose 918
E A Rose 738
Basin Excitement
Mohnen Impressive 1093
Mohnen Jilt 787
Chestnut Sandy 579
WillowCreek Reflect 932 7113
Chestnut Sandy 175
CN Sandy 9469

33 Chestnut Erica WJ 8135

REG#19290435
BD: 3-23-18
Tattoo: 8135
BW: 77
Adj. WW: 601
Adj. YW: 855

BW: **+3.3**
WW: **+63**
YW: **+103**
Milk: **+19**
SB: **+123**

Top 20% of the breed for WW as well as \$M. Certainly one that combines those traits on foot as well with that youthful cowy look with extra performance and growth that she will certainly stamp into her progeny. Unanimous daughters have consistently rose to the forefront producing the top end calves for us and with her mother falling into that category at a young age, this female is destined to do great things for your program.



4382 Dam of KR Incredible
8166, AI Sire

A.I. Sire: KR Incredible 8166 on 4-15-19 Safe to AI • Due approx 1-20-20
Pasture Sire: R5 Solution E111 from 5-19 to 6-6-19
Pasture Sire: CN Conversation GLM 1408 from 6-9 to 8-1-19

Connealy Consensus
Connealy Earnan 076E
Brazila of Conanga 3991 839A
Brooking Asset 5065
S A V Final Answer 0035
E A Rose 918
E A Rose 738
Visiontopline Royal Stockman
Vision Unanimous 1418
Vision Edella 665
Chestnut Erica WJ 525
Southland Thriller 83X
LH Erica 2002
LH Erica 484

34 Chestnut Blackbird DS 8143

REG#19290438
BD: 4-4-18
Tattoo: 8143
BW: 80
Adj. WW: 530
Adj. YW: 780

BW: **+9**
WW: **+44**
YW: **+83**
Milk: **+24**
SB: **+126**

This females mother was a previous show heifer and was campaigned successfully being the Champion bred and owned female at the Angus Field Day. Just like her mother this one is big bodied, easy fleshing with plenty of maternal quality and added power. We love the influence of Bismark in these cows as they consistently gotten the job done. This girl will certainly do so as well in her long future as a brood cow.



CN Conversation GLM
1408, Pasture Sire

A.I. Sire: R5 Solution E111 on 5-23-19
Pasture Sire: R5 Solution E111 from 5-19 to 6-6-19
Pasture Sire: CN Conversation GLM 1408 from 6-9 to 8-1-19 Safe
Due Mid March

Summitcrest Complete 1P55
KM Broken Bow 002
Summitcrest Princess 0P12
Styles Broken Bow V24
S A V Harvester 0338
Styles Jasmine S44
Plainview Jasmine C48
G A R Grid Maker
S A V Bismarck 5682
S A V Abigale 0451
Chestnut Blackbird 416
MCATL Pure Product 903-55
Chestnut Blackbird 216
CN Blackbird 068

35

Chestnut Blackcap 8145

REG#19290440
BD: 4-11-18
Tattoo: 8145
BW: 92
Adj. WW: 600
Adj. YW: N/A

BW: **+4.8**
WW: **+48**
YW: **+84**
Milk: **+21**
SB: **+110**

Another female whose mother is on this years sale and this girl ranks in the top 15% for \$M. Long spined, sound moving, with plenty of body and rib shape. Good and practical in her kind with tons of quality and consistency in her pedigree.



Basin Rainmaker
4404, AI Sire

A.I. Sire: Basin Rainmaker 4404 on 4-14-19 Safe to AI • Due approx 1-19-20
Pasture Sire: R5 Solution E111 from 5-19 to 6-6-19
Pasture Sire: CN Conversation GLM 1408 from 6-9 to 8-1-19

O C C Legend 616L
B C Lookout 7024
Gibbet Hill Mignonne E37
CLF Lookout 56C
Bushs Ambition 507
CLF Caroline 93U
Meado-West 512R
MOGCK Sure Shot
Mogck Bullseye
Mogck Mary 1255
Chestnut Blackcap 481
S A V 004 Density 4336
Mohnen Blackcap J530
A L C Blackcap E03F

Winning Genetics at Chestnut Angus Farm



Ever since our kids started showing it was our goal that before they were done with their 4-H career we would raise a female that would rise to this occasion. We are very fortunate that we were able to accomplish this goal with this female of Reserve Supreme Champion Breeding Heifer at the 2019 Minnesota State Fair 4-H Show. Special thanks to everyone who helped along the way. Thank you simply isn't enough for our appreciation and when they say the best people are Ag. People, surround yourself with them and you will understand why.

All of us here at Chestnut Angus are extremely humbled and fortunate to have exhibited the Champion Steer at the NJAS. Words cannot express our appreciation and support to everyone that helped along the way. What makes the victory even sweeter is that he was born and raised here at Chestnut Angus.





Here is a set of commercial females that we think are extremely high quality with plenty of versatility. They have performance with plenty of body and dimension but most importantly they possess that youthful brood cow look. Whether you use them as recipis or part of your commercial herd, the maternal quality that we feel they represent make them candidates to be tremendous cows with tons of longevity and future.

37

36

81

Commercial BD: 1-3-18

A.I. Sire: Stevenson Turning Point on 4-14-19 Safe to AI
Due approx 1-19-20

Pasture Sire: R5 Solution E111 from 5-19 to 6-6-19

Pasture Sire: CN Conversation GLM 1408 from 6-9 to 8-1-19

37

83

Commercial BD: 1-4-18

A.I. Sire: CTS Remedy 1T01 on 4-14-19 Safe to AI
Due approx 1-19-20

Pasture Sire: R5 Solution E111 from 5-19 to 6-6-19

Pasture Sire: CN Conversation GLM 1408 from 6-9 to 8-1-19

38

85

Commercial BD: 1-8-18

A.I. Sire: KR Incredible 8166 on 4-14-19 Safe to AI
Due approx 1-20-20

Pasture Sire: R5 Solution E111 from 5-19 to 6-6-19

Pasture Sire: CN Conversation GLM 1408 from 6-9 to 8-1-19

39

813

Commercial BD: 1-12-18

A.I. Sire: Barstow Bankroll B73 on 4-14-19 Safe to AI
Due approx 1-19-20

Pasture Sire: R5 Solution E111 from 5-19 to 6-6-19

Pasture Sire: CN Conversation GLM 1408 from 6-9 to 8-1-19

40

869

Commercial BD: 2-9-18

A.I. Sire: KR Incredible 8166 on 4-14-19 Safe to AI
Due approx 1-20-20

Pasture Sire: R5 Solution E111 from 5-19 to 6-6-19

Pasture Sire: CN Conversation GLM 1408 from 6-9 to 8-1-19

41

8127

Commercial BD: 3-17-18

A.I. Sire: KR Incredible 8166 on 4-14-19 Safe to AI
Due approx 1-20-20

Pasture Sire: R5 Solution E111 from 5-19 to 6-6-19

Pasture Sire: CN Conversation GLM 1408 from 6-9 to 8-1-19

42

8137

Commercial BD: 3-28-18

A.I. Sire: KR Incredible 8166 on 4-14-19 Safe to AI
Due approx 1-20-20

Pasture Sire: R5 Solution E111 from 5-19 to 6-6-19

Pasture Sire: CN Conversation GLM 1408 from 6-9 to 8-1-19

43

8142

Commercial BD: 4-2-18

A.I. Sire: SAC Conversation on 4-14-19 Safe to AI
Due approx 1-19-20

Pasture Sire: R5 Solution E111 from 5-19 to 6-6-19

Pasture Sire: CN Conversation GLM 1408 from 6-9 to 8-1-19

44

8146

Commercial BD: 4-21-18

A.I. Sire: VAR Index on 4-14-19

Pasture Sire: R5 Solution E111 from 5-19 to 6-6-19 Safe
Due End Feb Early March

Pasture Sire: CN Conversation GLM 1408 from 6-9 to 8-1-19

45

894

Commercial BD: 3-1

A.I. Sire: Stevenson Turning Point on 4-14-19 Safe to AI

Pasture Sire: R5 Solution E111 from 5-19 to 6-6-19

Pasture Sire: CN Conversation GLM 1408 from 6-9 to 8-1-19

46 CN SM Queen 538



Chestnut
Redemption 38,
AI Sire

A really awesome looking First Round daughter that is massive bodied with plenty of thickness and dimension and sound as a cat. She lands in the top 10% of the breed for WW and YW as well as \$B. She also lands in the top 5% for \$F. Power in the blood as well as on foot with this female that we are certain you will appreciate come sale day.

BW:	+7.0
WW:	+65
YW:	+110
Milk:	+28
\$B:	+151

REG#18870763 BD: 2-5-15
Tattoo: 538 BW: 94 Adj. WW: 690 Adj. YW: N/A

EXG RS First Rate S903 R3
Dameron First Class
Dameron Northern Miss 3114
VA First Round
R&C Keystone 281S
R&C Keystone Lady 106K-810U
R&C Lady Appeal 106K
HARB Onward 786 J H
VAR Rocky 80029
Vermilion Lass 0029
CN SM Queen 417 254
WK Wacker
Chestnut Queen Wacker 417
CN Queen of Wetonka 211

A.I. Sire: Chestnut Redemption 38
on 5-25-19 Safe to AI
Due approx 3-1-20
Pasture Sire: CLF Cash 62C
from 6-10 to 8-1-19

47 CN SM Queen 78



Chestnut
Redemption 38,
AI Sire

A Conversation daughter that goes back to First Round on the bottom side. Her mother is also on this year's sale and this one is a moderate framed big bodied young female that is still smooth patterned and good in her lines. Tons of future in this great young female!

BW:	+2.1
WW:	+49
YW:	+88
Milk:	+28
\$B:	+131

REG#19008600 BD: 1-11-17
Tattoo: 78 BW: 66 Adj. WW: 618 Adj. WW: 998

BT Crossover 758N
Silveiras Conversion 8064
EXG Saras Dream S609 R3
SAC Conversation
S A V 004 Predominant 4438
Lafins Farrah 0252
Lafins Farrah 7215
Dameron First Class
VA First Round
R&C Keystone Lady 106K-810U
CN SM Queen 538
VAR Rocky 80029
CN SM Queen 417 254
Chestnut Queen Wacker 417

A.I. Sire: Chestnut Redemption 38
on 4-19-19
Pasture Sire: HAF Bragging Rights 1725
from 6-10 to 8-1-19 Safe
Due Mid March

Unable to attend sale day? Online bidding available at www.LiveAuctions.tv

48 Chestnut Beauty 65 JB 756

REG#19003226 BD: 2-7-17

Tattoo: 756 BW: 80 Adj. WW: 640 Adj. YW: 898

Connealy Consensus
Connealy Earnan 076E
Brazila of Conanga 3991 839A
Brooking Bank Note 4040
S A V Final Answer 0035
E A Rose 918
E A Rose 738
Sitz Dash 10277
Barstow Cash
Barstow Queen W16
Chestnut Beauty 65 324
WK Wacker
Chestnut BEAUTY65
Chestnut Beauty 319

A.I. Sire: Chestnut Redemption 38
on 4-18-19 Safe to AI • Due approx 1-23-20
Pasture Sire: KR Incredible 8166
from 6-10 to 8-1-19



BW: **+1.3**
WW: **+64**
YW: **+108**
Milk: **+25**
\$B: **+114**

A young Bank Note daughter that lands in the top 10% of the breed for WW and CEM as well as 15% for YW. A young female that shows to be maternal as well as performance oriented and has certainly shone through doing that with her progeny thus far. Buy with confidence as this will be a money making cow for years to come.



Chestnut Redemption
38, AI Sire

49 Chestnut WJ Erica 410

REG#17957267
BD: 1-15-14
Tattoo: 410
BW: 68
Adj. WW: 703
Adj. YW: N/A

BW: **+1.5**
WW: **+52**
YW: **+87**
Milk: **+20**
\$B: **+112**

A.I. Sire: Cicle K Beast Mode
7K3 on 5-4-19 Safe to AI
Due approx 2-8-20
Pasture Sire: HAF Bragging
Rights 1725 from 6-10 to 8-1-19

G A R Retail Product
Connealy Product 568
Pride Fine of Conanga 566
Connealy Final Product
Connealy Deep Canyon 454
Ebonista of Conanga 471
Ebonisa of Conanga 5469
Southland Two Fitty 250T
Southland Thriller 83X
Southland Belle 89R
LH Erica 2002
VAR Lifeline 1672
LH Erica 484
L H Erica 910



Circle K Beast
Mode 7K3, AI Sire

Here is a bold sprung deep bodied female with plenty of dimension from end to end. She ranks in the top 30% for WW with her progeny having an average YW ratio of 103. Good in her lines with that brood cow look a super good 5 year old with tons of production life left in her.

50 Chestnut Arkdale Pride 417

REG#18697229
BD: 1-22-14
Tattoo: 417
BW: 82
Adj. WW: 753
Adj. YW: N/A

BW: **+2.9**
WW: **+60**
YW: **+103**
Milk: **+29**
\$B: **+143**

Here is a female that ranks in the top 15% for \$B as well as WW. She ranks in the top 20% for YW or MM. Her weaned off progeny have a ratio of 107. Long bodied smooth patterned and sound structured. Certainly one that is practical in her kind with plenty of longevity.

Pasture Sire: Brookings Asset 5065 from 6-10 to 8-1-19 Safe
Due Mid April

C R A Bextor 872 5205 608
TC Aberdeen 759
TC Blackbird 4034
Ellingson Identity 9104
Wulffs Ext 6106
EA Queen Dolly 7813
EA Queen Dolly 5029
Mytty In Focus
MOGCK Sure Shot
Mogck Black Lass 2065
Chestnut Arkdale Pride 215
Plainview Sun Dance G39
Chestnut Arkdale Pride 021
CN Arkdale Pride 7447

51

Chestnut Monica 425

REG#18724578 BD: 2-1-14

Tattoo: 425 BW: 79 Adj. WW: 752 Adj. YW: N/A



BW: **+2.6**
WW: **+46**
YW: **+85**
Milk: **+29**
\$B: **+139**

This gal is rugged and stout in her build with plenty of added thickness and dimension all the way through. She ranks in the top 20% for her \$B and top 10% for \$F. Top 10% for docility as well and 25% for milk. Tons of genetic merit backed by plenty of performance and maternal quality on foot.



BUSHS High Caliber, AI Sire

A.I. Sire: BUSHS High Caliber on 6-8-19 Safe to AI
Due approx 3-16-20

Pasture Sire: Chestnut Conversation GLM 1418 from 6-10 to 8-1-19

HF Kodiak 5R
HF Tiger 5T
HF Echo 84R
HF Untapped 58Z
HF Done Right 125R
HF Blackbird 223U
HF Blackbird 199P
EXAR Pit Boss 409
JAF Over the Limit 14U
BT Polly 54L
Chestnut Monica 221
Bon View New Design 1407
TRMS Monica 7002T
TR Ms Monica 5013R

52

Chestnut Blackcap 481

REG#19005438
BD: 1-22-14
Tattoo: 481
BW: 80
Adj. WW: 596
Adj. YW: N/A

BW: **+2.8**
WW: **+50**
YW: **+88**
Milk: **+28**
\$B: **+123**

This girl as well as her mother have consistently done an excellent job of producing calves that simply flat out perform. This girl has weaned off 4 calves with an average weaning ratio of 105 and yearling weight ratio of 110. A good looking cow in her own right this girl combines the visual appeal with doing her job as a cow and putting \$\$ in your pocket. Be sure to check her out Black Friday.

Pasture Sire: Brookings Asset 5056 from 6-10 to 8-1-19 Safe • Due Late April/Early May

Mytty In Focus
MOGCK Sure Shot
Mogck Black Lass 2065
Mogck Bullseye
K C F Bennett Coalition SCC
Mogck Mary 1255
Mogck Mary C 1757
S A V 8180 Traveler 004
S A V 004 Density 4336
S A V May 7238
Mohnen Blackcap J530
N Bar Emulation EXT
A L C Blackcap E03F
Bon View Blackcap 1330

53

Chestnut Ruby 087 418

REG#17954231
BD: 1-26-14
Tattoo: 418
BW: 72
Adj. WW: 651
Adj. YW: N/A

BW: **+7**
WW: **+44**
YW: **+78**
Milk: **+20**
\$B: **+88**

This female goes back to a very consistent producing dam and has the potential to continue to follow in her mothers footsteps. She has certainly done that up to this point weaning 3 calves with a weaning weight ratio of 101. Tons of future in this cow that is just in her prime of production.

A.I. Sire: HAF Bragging Rights 1725 on 6-11-19
Pasture Sire: RBM Next Step F05 from 6-10 to 8-1-19 Safe
Due Early April

Exar Sudden Impact 1537
EXAR Pit Boss 409
WK Winnie 7305
JAF Over the Limit 14U
Top Secret 9757 E A R
BT Polly 54L
Pauls Polly 671
Exar Sudden Impact 1537
Plainview Sudden Impact D27
Plainview Proud Lassie 13A
Chestnut Ruby 087
Northern Improvement 4480 GF
Chestnut Ruby Improvement 54
Chestnut Ruby Dateline 111

54

Chestnut Beauty 428

REG#17954664 BD: 2-13-14

Tattoo: 428 BW: 85 Adj. WW: 665 Adj. YW: N/A

Connealy Product 568
Connealy Final Product
Ebonista of Conanga 471
MCATL Pure Product 903-55
WAR Alliance 9126 6006
M A Esta 55-252
R A Esta R243
Schurrtop MC 2500
WK 2500 MC 6116
WK Mina 2389
C N Beauty 8538
WK Wacker
Chestnut Beauty Wacker 51
CN Dateline Beauty 2292

A.I. Sire: EXAR Monumental 6056B
on 5-4-19 Safe to AI
Due approx 2-8-20
Pasture Sire: KR Incredible 8166
from 6-10 to 8-1-19



BW: **+3.6**
WW: **+52**
YW: **+95**
Milk: **+27**
\$B: **+132**

A female that lands in the top 10% for RADG. Here is a big bodied long fronted female that is super sound and correct on the move. Really good cow power in this female while still maintaining that youthful presence. Super complete female with tons of future left in her.



EXAR Monumental 6056B, AI Sire

55

Chestnut Queen Herself 427

REG#19290417
BD: 2-3-14
Tattoo: 427
BW: 85
Adj. WW: 690
Adj. YW: N/A

BW: **+4.6**
WW: **+49**
YW: **+77**
Milk: **+16**
\$B: **+125**

Here is a super nice First Round daughter that awesome on her feet and legs with a beautiful udder on her as well. Long bodied with plenty of thickness and dimension. We love these first round daughters and they have made a huge impact on our operation and this one is no exception.

A.I. Sire: Chestnut Undisputed WJ 338 on 5-22-19 Safe to AI
Due approx 2-26-20
Pasture Sire: Chestnut Undisputed WJ 338 from 6-10 to 8-1-19

EXG RS First Rate S903 R3
Dameron First Class
Dameron Northern Miss 3114
VA First Round
R&C Keystone 281S
R&C Keystone Lady 106K-810U
R&C Lady Appeal 106K
Chestnut Freedom 115
Chestnut Onyx 167
CW Miss Elgaline 430
CN Queen Herself 042
CW 641 Gunsmoke 320
Chestnut Queen Herself 2362
Chestnut Queen EXT 913

56

Chestnut 3726 Lady 446

REG#17953523
BD: 2-15-14
Tattoo: 446
BW: 83
Adj. WW: 604
Adj. YW: N/A

BW: **+2.1**
WW: **+38**
YW: **+74**
Milk: **+19**
\$B: **+71**

This gal lands in the top 15% for CEM and 30% for CED. Here is a smooth patterned bold sprung powerfully built female that is good in her lines and commands that brood cow look. Youthful in her design and if you appreciate her on paper you're sure to appreciate her on sale day.

AI Sire: Chestnut Redemption 38 on 5-26-19
Due Mid April
Pasture Sire: Chestnut Conversation GLM 1418 from 6-10 to 8-1-19 Safe

Sitz Upward 307R
Sitz Dash 10277
Sitz Everelda Entense 2665
Connealy Sandhills 122
Connealy Cattlelac
Barbera of Conanga 9125
Barballa of Conanga 4629
TC One Way 618
WK Redo
WK Miss Angus 4587
CN 3726 Lady 067
Connealy Power One
Rail CN 3726 Lady 8318
DS 3726 Freedom Lady 65 CW

Unable to attend sale day? Online bidding available at www.LiveAuctions.tv

57

Chestnut Fannie 429



BW: +3.0
WW: +48
YW: +80
Milk: +20
\$B: +95

Super big bodied sound moving female that possesses that added depth of body combined with that extra brood cow look. Another first round daughter that consistently does a good job raising calves with the structural integrity to continue for years to come.

REG#17953522 BD: 2-4-14
Tattoo: 429 BW: 85 Adj. WW: 726 Adj. YW: N/A

EXG RS First Rate S903 R3
Dameron First Class
Dameron Northern Miss 3114
VA First Round
R&C Keystone 281S
R&C Keystone Lady 106K-810U
R&C Lady Appeal 106K
S A V 8180 Traveler 004
K F Traveler 106
Leachman Isabella F3059
CN Fannie 9509
H S A F Bando 1961
CN Fannie 5517 7127
Plainview Fannie F17

A.I. Sire: BUSHS High Caliber
on 6-5-19 Safe to AI • Due approx 3-12-20
Pasture Sire: Chestnut Undisputed
WJ 338 from 6-10 to 8-1-19



BUSHS High Caliber, AI Sire

58

CN PF Queen Eva 025 460

REG#17953517
BD: 3-6-14
Tattoo: 460
BW: 88
Adj. WW: 687
Adj. YW: N/A

BW: +4.6
WW: +54
YW: +93
Milk: +28
\$B: +100

Here is a sharp featured angular female that goes back to a very influential female during her time here at Chestnut Angus. Here is a female that is following in her mother's footsteps generating sound functional high performance good looking cattle. Tons of life ahead of this one and being bred to a powerful Next Step son this is an exciting mating.

A.I. Sire: RBM Next Step F05 on 5-11-19 Safe to AI • Due approx 2-15-20
Pasture Sire: HAF Bragging Rights 1725 from 6-10 to 8-1-19

Rito 112 of 2536 Rito 616
TC One Way 618
TC Quality 7122
WK Redo
Exar Exceptional 1505
WK Miss Angus 4587
WK Miss Angus 1403
Hyline Right Time 338
Pine Ridge Hammer S322
Belmont Lady 9015 3313
CN Queen Eva 025
WK Wacker
Chestnut Queen Eva 56
Chestnut Queen Eva M D 2122

59

CN CW Queen Eva 465

REG#17957273
BD: 3-9-14
Tattoo: 465
BW: 87
Adj. WW: 587
Adj. YW: N/A

BW: +4.9
WW: +33
YW: +63
Milk: +20
\$B: +96

Long bodied smooth patterned deep bodied and sound as a cat. This is one good looking cow that just simply gets the job done every time. She is just so good in every aspect combining power with femininity and practicality. Be sure to look her up on sale day.



Chestnut Redemption 38, AI Sire

A.I. Sire: Chestnut Redemption 38 on 5-7-19 Safe to AI • Due approx 2-21-20
Pasture Sire: Brookings Asset 5065 from 6-10 to 8-1-19

S A V Final Answer 0035
S A V Pioneer 7301
S A V Blackbird 5297
CN Pioneer 780 Raml
TC Freedom 104
DS 3726 Freedom Lady 65 CW
WK Black Lady 3726
Connealy Reflection
WillowCreek Reflect 932 7113
Willow Creek Grid 7113 311
CN CW Queen Eva 154
S A V Net Worth 4200
JJH Taylor 95
CW 4128 Queenmere Eva 156

60 Chestnut Queen Eva 8168 450

REG#17954232 BD: 3-18-14

Tattoo: 450 BW: 85 Adj. WW: 720 Adj. YW: N/A

Exar Sudden Impact 1537
EXAR Pit Boss 409
WK Winnie 7305
JAF Over the Limit 14U
Top Secret 9757 E A R
BT Polly 54L
Pauls Polly 671
TC Freedom 104
Chestnut Freedom 115
CN Queen of Wetonka 211
C N Queen Exa 56 8168
WK Wacker
Chestnut Queen Eva 56
Chestnut Queen Eva M D 2122

A.I. Sire: Stevenson Turning Point
on 5-27-19 Safe to AI • Due approx 3-3-20
Pasture Sire: HAF Bragging Rights 1725
from 6-10 to 8-1-19



BW: +3.6
WW: +51
YW: +93
Milk: +22
\$B: +128

Rugged or Stout are two terms that we would use if we would have to describe this female in one word. Tons of power and performance in this gal with tons of longevity as her mom is still in production here at Chestnut Angus. A phenotypic beast who continually passes that on to her progeny.



Stevenson Turning Point, AI Sire

61 Chestnut Queen Pat 470

REG#17954666
BD: 3-16-14
Tattoo: 470
BW: 88
Adj. WW: 580
Adj. YW: N/A

BW: +5.3
WW: +42
YW: +74
Milk: +22
\$B: +95

This gal has weaned off 4 calves with an average weaning weight ratio of 104. And after ultrasound an average ribeye ratio of 103. Performance and carcass merit is what this gal generates and is proven by the calves that go across the scale. She does her job and then some with tons of opportunities yet to come.



RIDL Roosevelt
820, AI Sire

Rito 112 of 2536 Rito 616
TC One Way 618
TC Quality 7122
WK Redo
Exar Exceptional 1505
WK Miss Angus 4587
WK Miss Angus 1403
LaGrand Sun Dance 4211
Plainview Sun Dance G39
S C C Beauty 2100
CN Queen Pat 035
BR Midland
J J D Queen Pat 3305
WK Queen Pat 3207

A.I. Sire: RIDL Roosevelt 820 on 5-4-19 Safe to AI • Due approx 2-8-20
Pasture Sire: HAF Bragging Rights 1725 from 6-10 to 8-1-19

62 Chestnut Georgina 472

REG#17953520
BD: 3-23-14
Tattoo: 472
BW: 83
Adj. WW: 629
Adj. YW: N/A

BW: +1.5
WW: +31
YW: +59
Milk: +25
\$B: +103

Sharp and smooth long bodied and sound moving. A member of the Georgina Cow Family weaning off 4 calves with an average weaning weight ratio of 103. Another female where the proof is in her progeny as to what she can do as a cow and being bred to Redemption for 2020, the trend certainly won't stop.



Chestnut
Redemption 38,
AI Sire

EXAR Pit Boss 409
JAF Over the Limit 14U
BT Polly 54L
CN Over the Limit 442
BR Midland
WK Primrose 6031
WK Primrose 1180
Connealy Onward
H A R B Rick O'Shay 838 J H
H A R B Juanada Erica 280 JH
WK Georgina 0266
EXAR WK 1560
WK Georgina 3416
WK Georgina 1338

A.I. Sire: Chestnut Redemption 38 on 5-4-19 Safe to AI • Due approx 2-8-20
Pasture Sire: HAF Bragging Rights 1725 from 6-10 to 8-1-19

63

CN Queen Herself 437

REG#17954667 BD: 2-6-14

Tattoo: 437 BW: 88 Adj. WW: 769 Adj. YW: N/A



BW: **+4.4**
WW: **+72**
YW: **+114**
Milk: **+35**
\$B: **+137**

Here is a sleek fronted bold sprung high performing cow that is awesome when it comes to milk production. She has a bull this year that will be in our 2020 Denver pen. This girl never misses as she possesses so much brood cow quality. On paper she lands in the top 3% for WW and \$W, 4% for Milk, and 25% for \$B. Power on foot and paper with this cow.



Merit Sting 7047E,
AI Sire

64

Chestnut Blackbird 375

REG#18211097
BD: 4-2-13
Tattoo: 375
BW: 85
Adj. WW: 625
Adj. YW: N/A

BW: **+3.0**
WW: **+43**
YW: **+75**
Milk: **+22**
\$B: **+94**

Super sharp and angular cow that is long and extended. Long bodied and smooth patterned with her progeny possessing a YW ratio average of 103. Sound moving and youthful and maternal in her look while still stamping that extra growth and performance in her progeny.

A.I. Sire: Chestnut Undisputed WJ 338 on 5-27-19
Pasture Sire: HAF Bragging Rights 1725 from 6-10 to 8-1-19 Safe Due Mid April

Hyline Right Time 338
Pine Ridge Hammer S322
Belmont Lady 9015 3313
WK Hammer 1011
WK Prototype 3045
WK Miss 6191
WK Miss 2345
B/R New Design 036
B/R New Frontier 095
White Fence Pride H1
CN Blackbird 618
Bon View New Design 1407
Chestnut Blkbird Fortune 262
CN Blackbird Legend 190

65

Chestnut Beauty 336

REG#18249212
BD: 2-19-13
Tattoo: 336
BW: 92
Adj. WW: 666
Adj. YW: N/A

BW: **+5.4**
WW: **+53**
YW: **+95**
Milk: **+19**
\$B: **+121**

Powerhouse female here that is massive bodied, big footed, stout boned, with plenty of thickness and dimension throughout. She has weaned off 5 calves with an average YW ratio of 110. No doubt performance and power with plenty of maternal merit in this girl that has certainly done her job and then some. Lots of longevity left in this one and one we hope you find sale day.



Ellingson
Homestead 6030,
AI Sire

A.I. Sire: Ellingson Homestead 6030 on 5-4-19 Safe to AI • Due approx 2-8-20
Pasture Sire: Brooking Asset 5065 from 6-10 to 8-1-19

Connealy Onward
Sitz Upward 307R
Sitz Henrietta Pride 81M
Chestnut PF Up Start 760
Exar Sudden Impact 1537
Chestnut Beauty 319
C N Touchstone Beauty 54
TC One Way 618
WK Redo
WK Miss Angus 4587
CN Beauty 08
WK 2500 MC 6116
C N Beauty 8538
Chestnut Beauty Wacker 51

66 Chestnut Lucy 314

REG#18211099 BD: 2-1-13

Tattoo: 314 BW: 85 Adj. WW: 709 Adj. YW: N/A

Exar Lutton 1831
Plainview Lutton E102
Plainview Pride C123
Fruhling Shadow
Fruhling Sieville
Fruhling Sieville Lady
Fruhling's Lady
HARB Onward 786 J H
VAR Rocky 80029
Vermilion Lass 0029
CN Lucy 04
Chestnut Freedom 115
C N Lucy 514 818
CN Erica Lucy 2400 514



A.I. Sire: MOGCK Entice
on 5-4-19

Pasture Sire: KR Incredible 8166
from 6-10 to 8-1-19 Safe
Due Early April

BW: **+4.0**
WW: **+56**
YW: **+93**
Milk: **+30**
\$B: **+139**

A cow that ranks in the top 20% for \$B with a value of 137 as well as the top 20% for milk with a value of +29. Out of a really good Rocky daughter, this girl is big footed stout boned while still possessing that really good maternal cowy look. Performance and maternal quality on foot and paper make this girl a true sale highlight.



MOGCK Entice, AI Sire

67 Chestnut Intent 321

REG#18249208
BD: 2-3-13
Tattoo: 321
BW: 72
Adj. WW: 581
Adj. YW: N/A

BW: **+1.4**
WW: **+47**
YW: **+88**
Milk: **+31**
\$B: **+136**

A sleek smooth patterned cow that is really correct on her feet and legs and ranks in the top 25% for \$B. She also ranks in the top 20% for CEM and 2% for Docility. Really functional and practical in her type and kind with plenty of longevity for years to come.

A.I. Sire: KR Incredible 8166 on 4-19-19 Safe to AI • Due approx 1-24-20
Pasture Sire: CLF Cash 62C from 6-10 to 8-1-19

Mytty In Focus
MOGCK Sure Shot
Mogck Black Lass 2065
Mogck Bullseye
K C F Bennett Coalition SCC
Mogck Mary 1255
Mogck Mary C 1757
R P 3RD Bushwacker
WK Wacker
WK Primrose 0305
CN Intent 7567
CW Ultravox 48
CN PF Intent Ultravox 331
W F Sweet Darling 333

68 Chestnut Missy 243

REG#17352477
BD: 2-20-12
Tattoo: 243
BW: 75
Adj. WW: 656
Adj. YW: N/A

BW: **+1.9**
WW: **+36**
YW: **+60**
Milk: **+25**
\$B: **+106**

A cow that has certainly done her job and then some with plenty of life still in her to make a great impact on your operation. Weaning off 6 calves with an average wean ratio of 98. Long bodied and smooth patterned and sound moving with plenty of longevity to stay in production for years to come.



Chestnut
Redemption 38,
AI Sire

A.I. Sire: Chestnut Redemption 38 on 5-4-19 Safe to AI • Due approx 2-8-20
Pasture Sire: CLF Cash 62C from 6-10 to 8-1-19

Exar Lutton 1831
Plainview Lutton E102
Plainview Pride C123
Fruhling Shadow
Fruhling Sieville
Fruhling Sieville Lady
Fruhling's Lady
G D A R Rainmaker 340
Sitz S L S Rainmaker 7596
SLS Barbara Perfection 2571
North Fork Missy 1013
North Fork Mandate 7072
North Fork Missy 9034
North Fork Erroline 3098

Unable to attend sale day? Online bidding available at www.LiveAuctions.tv

THANK YOU

to all our bidders and buyers over the years. We appreciate your friendship and trust in our program.

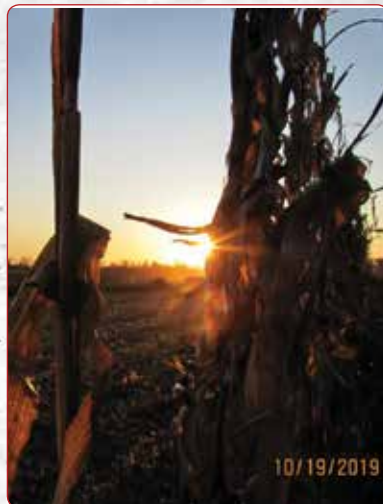


CONTACT:
Glenn
507-820-1502
Wesley
507-215-7348
Justin
507-696-1133



For Semen: Contact Wesley 507-215-7348

CHESTNUT ANGUS FARM



10/19/2019



10/19/2019 07:52



CHESTNUT ANGUS FARM

Elite Female Sale 2019



Special Pick Lot



It is with our great pleasure that we are offering you the chance to purchase **YOUR PICK OF THE ENTIRE 2019 HEIFER CALF CROP**. When it comes to deciding which

cattle to put on the sale we go back and forth and try to put together a set that will work for multiple customers

with several different goals in mind. Each year

we try and offer something different and

intriguing to draw people here to our sale.

Along with that each year we do our best to be on the cutting edge of producing quality cattle

while still maintaining our own identity. With

having 2 great years of success at the National

Western Stock Show Pen Heifer Show we are

thrilled to give you the chance to have the very first pick of the 2019 Heifer Calves. This includes

any of the females that are headed to Denver in

2020 and also the females consigned to this sale,

and the 100+ females in our replacement pen.

If you chose to pick one of the females that

will be going to Denver, then you will not take

possession of her until after Denver. This is a

special opportunity and the chance to purchase

a foundation female for your operation!

**Black
Friday
Sale!**

Friday, November 29th at 2:00 PM

At the Farm, Pipestone, Minnesota



Eberspacher Ent. Inc.

2904 Co. Road 6
Marshall, MN 56258

First Class Mail: Time Dated Material!

FIRST CLASS
MAIL
U.S. POSTAGE
PAID
MN MAIL